

# Boom isolation kit

Retrofit kits for Boomer L1D/M1D/L2D/M2D



# Prevent accidents, safeguard operations

Introducing the Boom isolation kit for Direct Control System (DCS) rigs. Specifically designed for isolating boom functions during maintenance and service. Upgrade your equipment with the retrofit kit and make operations safer. The kit isolates feed, boom and rock drill functions without impacting operational cycle time. A machine can continue to run on electrical or diesel engine mode while all boom functions are isolated.

A straightforward retrofit kit, easy-to-install and reset.

Indication lamps on the operator drill panel, canopy or cabin to indicate switch activation.



A switch on each side of the rig. The safety system will be activated for both booms if either switch is turned on.

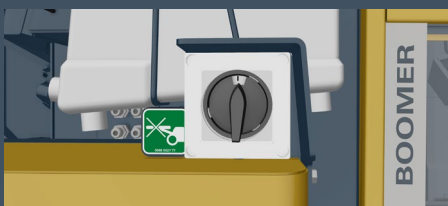
Safe for an operator to enter the drilling area after activating the switch.

## + Main benefits

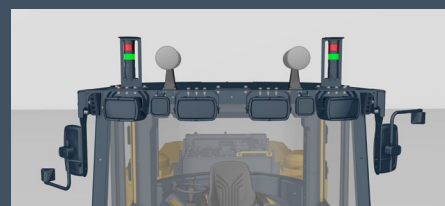
Enhanced safety - feed, boom and rock drill functions are isolated while the machine is still running.

Reliability - easy to maintain and reliable.

Straightforward - an easy to install kit with step-by-step instructions provided.



Boom isolation switch on each side of the rig for isolating the boom functions.



Color-coded indication lamps on the cabin or canopy to indicate boom isolation status.



Indication lamps on the operator drill panel to indicate the switch activation (either left or right) to the operator inside the cabin or canopy.

# Technical specifications

---

## Boom isolation kits

Part number	Description
6060 1414 80	Boom isolation kit for Boomer L1D/M1D
6060 1413 80	Boom isolation kit for Boomer L2D/M2D

# United in performance. Inspired by innovation.

Performance unites us, innovation inspires us, and commitment drives us to keep moving forward. Count on Epiroc to deliver the solutions you need to succeed today and the technology to lead tomorrow.  
**[epiroc.com](https://www.epiroc.com)**

